

## Attorney Bio

---

Shannon is an associate in WSHB's Fresno office, where she handles complex civil litigation matters, including labor and employment law, construction, contract disputes, subrogation, and product liability. Shannon has worked in the legal field since 2008, when she began her career as a legal assistant in Fresno County. While working full-time, Shannon went back to school to obtain a bachelor's degree in Psychology. She subsequently applied to, and was accepted by, San Joaquin College of Law.

While in law school, Shannon was the President of the Student Bar Association and the Philanthropy and Social Chairperson for Delta Theta Phi Law Fraternity. Shannon was also a semi-finalist in the George Hopper Moot Court Competition and a participant in the UC Davis Asylum & Refugee Law National Moot Court Competition. Additionally, as a member of the Student Bar Association, Shannon helped raise thousands of dollars in scholarship funds for her fellow students.

Always looking to give back, Shannon has for the past several years volunteered for Relay For Life charity events, raising much needed funds for cancer research and captaining several relay teams. While in law school, she also volunteered for the New American Legal Clinic, where she assisted immigrants seeking citizenship; and volunteered for several charitable causes throughout Fresno County, earning her the Clovis Soroptimist Club's Women's Advocate of the Year Award.

## Education

---

San Joaquin College of Law (J.D., 2016)

University of Phoenix (B.A., 2012)

## Licensed to Practice in:

---

California

## Practice Areas

---

***Commercial and Business Litigation***

***Construction***

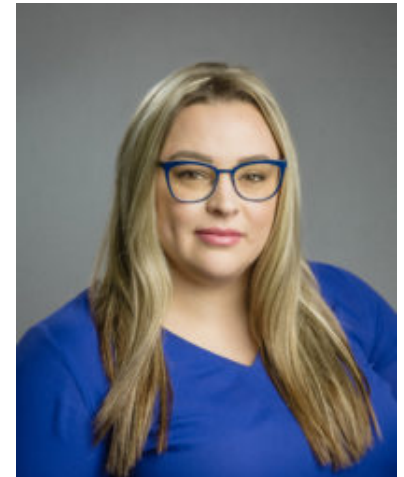
***Employment***

employment law, construction, contract disputes, subrogation, and product liability.

## Shannon Wallen

---

***Associate***



### Fresno

7108 North Fresno Street  
Suite 250

Fresno, CA 93720

**Tel:** (559) 437-2860

**Fax:** (559) 438-1350

swallen@wshblaw.com

**Direct:** (559) 437-2864

**Product Liability  
Subrogation**